

Dune Collection—

ELECTRODE
Nick Dine, 2003



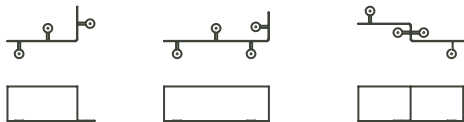
dune[®]



ELECTRODE

Nick Dine, 2003

Shelving system in powder coated steel.
max weight per shelf: 50 lbs.



L-Short: : 29 7/8"w X 9"d X 17 7/8"h
L-Long: 36"w X 9"d X 15 7/8"h
Zig-Zag: 36"w X 9"d X 17 7/8"h

Dune Showroom
200 Lexington Ave. T 212 → 925 → 6171
Suite 100 F 212 → 925 → 2273
NY, NY 10016 Dune-NY.com

dune®